

CATALOG CAMPERVANS & MOTORHOMES

2023 | EN

COIL & AIR SUSPENSION SYSTEMS



Suspension
Systems

**MAX COMFORT.
MAX CONTROL.
MAX SAFETY.**

Powerfull coil and air suspension systems

When more is required of a vehicle's chassis, we provide the solution with our suspension systems. Working closely with vehicle manufacturers and vehicle convertors, we design coil and air suspension systems for a wide variety of applications. Whether it is a service van, pickup, campervan, motorhome or ambulance. Our suspension systems ensure that comfort, driving characteristics and safety remain optimal even under these conditions. Thus, the safety of the driver and passengers is always guaranteed and can a vehicle be used for any specific purpose.

MAD TO THE MAX!

MAX COMFORT.

- Optimal comfort in both loaded and unloaded due to the increased suspension travel.
- Continuous and fully automatic ride height control with Air Master Ultimate.
- A comfortable and relaxed drive for driver and passengers in all circumstances.

MAX CONTROL.

- Optimal traction of front-wheel driven cars.
- Less impact from side winds on the vehicle stability.
- An appropriate suspension system leads to improved car handling in general.

MAX SAFETY.

- MAD suspension systems have been approved by independent certifying bodies.
- A constant towball height prevents a vehicle combination from swaying.
- Optimal stability and road holding in different or changing conditions - both loaded and unloaded - increases safety for driver and passengers.

Highest quality in every aspect
For 45 years!

Our suspension systems are of high quality and approved by TÜV and the RDW. This means they meet the highest international automotive standards.



Contents

- 4** **The best solution for every situation**
- 6** **Auxiliary coil suspension**
- 8** **Auxiliary air suspension**
- 10** **Full air suspension**
- 12** **Programm suspension systems**
- 15** **MAD Project service**



The best solution for every situation

Which suspension system do you choose? Every situation is unique. Therefore, make your choice based on:

- type of camper: campervan, semi-integrated or integral;
- the loading situation: for example, is the camper equipped with a storage or long rear overhang? Or is the camper regularly subjected to additional loads on the tow bar?;
- and specific customer requirements.

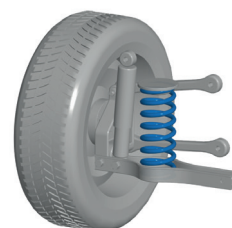
Coil springs A steady performer

The advantages of coil suspension system:

- ✓ Provides constant support to the original suspension system;
- ✓ Prevents the rear of the vehicle from sagging;
- ✓ Spring travel remains available when loaded (= comfort);
- ✓ Cost-effective solution;
- ✓ Easy to install and maintenance free;
- ✓ Improves comfort, stability and driveability;
- ✓ More ground clearance when combined with lift springs on the front axle;
- ✓ Ideal for bus campers.

Fitting time: 30 - 75 min.

€ € € € €



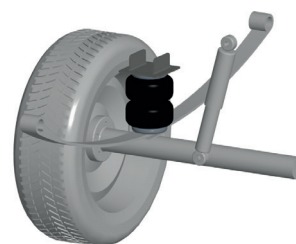
Air suspension Advanced adjustability

The advantages of an air suspension system:

- ✓ Provides adjustable support to the original suspension system;
- ✓ Adjustable ride height so that the camper/motorhome can be adjusted to height, including left and right separately. Useful for driving on and off a ferry and when levelling the vehicle;
- ✓ Provides maximum comfort and improves stability with varied loading;
- ✓ More direct vehicle response, improving driveability;
- ✓ Reduces cornering roll and crosswind sensitivity;
- ✓ Comes complete and pre-assembled;
- ✓ More ground clearance when combined with lift springs on the front axle;
- ✓ Ideal for semi integral and integral campers/motorhomes.

Fitting time: 90 - 240 min.

€ € € € €



YOUR ROAD TRIP

The ultimate experience



MAD suspension systems are approved by RDW e/o TÜV according to ECE R13.



The electronic components of the MAD air suspension systems are approved according to ECE R10.



MAD suspension systems are TÜV certified.



A steady support

Coil springs

Our auxiliary coil suspension systems provide additional support to the original suspension system in specific deployment a/o loading conditions. This keeps the camper/motorhome visibly at height at the rear and maintains traction when accelerating (front-wheel drive). In addition, driveability and stability improve, which contributes to safety.

It is also possible for most campers/motorhomes to replace the front springs with lift springs. These are 25% stronger and +/- 20 mm longer than the original springs, which will raise the vehicle. Thus, sufficient suspension travel remains available in all circumstances and the bumpstop is reached less quickly, increasing comfort on poor road surfaces and speed bumps.

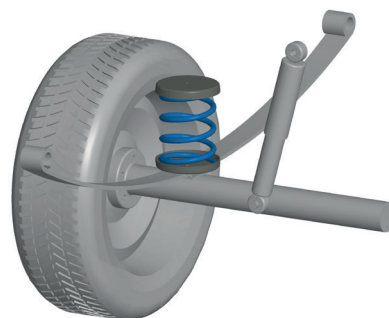
Coil suspension systems

Auxiliary springs are placed in or next to the existing main spring. They only do their job from a certain load level. As soon as the main springs can no longer cope, the auxiliary springs provide the additional support needed. There are also reinforced sets that replace the original main springs.

Auxiliary springs - 0 system

HV-.....0

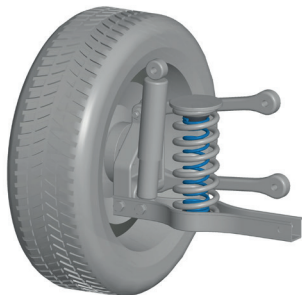
The 0 system auxiliary springs are fitted next to the original springs, between the axle and the chassis. Using the included mounting materials you fit the springs. This set is often used in combination with leaf spring vehicles.



Auxiliary - 5 system

HV-.....5

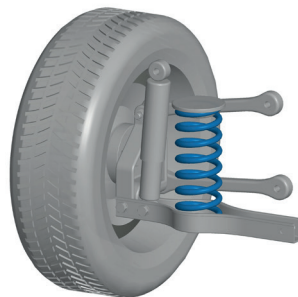
The 5 system auxiliary springs are fitted inside of the original main springs with the supplied spring seats. This is the ideal set for vehicles that are occasionally or lightly loaded and/or when towing a trailer.



Lift springs - 8 system

HV-.....8

With the reinforced main springs you replace the original springs (front and/or rear axle). Although the fit of these reinforced springs is similar to the original springs, they are 25% stronger and you gain 20 – 50 mm in height (depending on make and model). You can combine the booster springs with both MAD's coil springs and air suspension on the rear axle.



Strength of the springs

The weight of the load and deployment per vehicle is unique. This can have more or less impact on the suspension system in certain situations. That's why we offer different sets with varying spring strengths. In the catalog or online product finder you will find further details, with the 'heavy duty sets' for the heaviest deployment.



Lift spring front axle
Fiat Ducato, Citroën Jumper,
Peugeot Boxer and Opel Movano

Make each day comfortable.

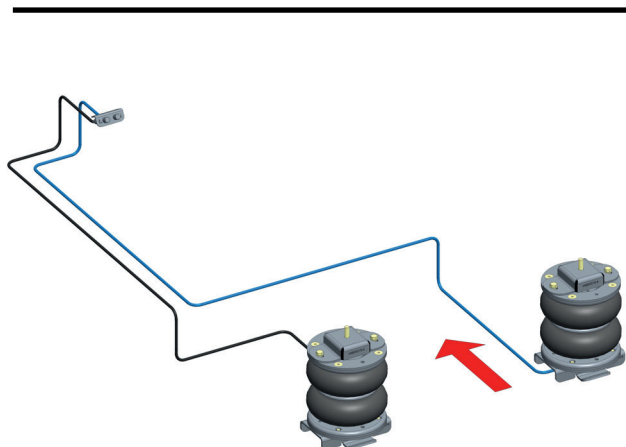
Auxiliary air suspension and full air suspension

With MAD's air suspension systems, a camper/ motorhome gains ride comfort and improves road-holding and driveability. Easily set the desired ride height on the stylish control panel to level the camper/motorhome. The height can be adjusted left and right separately. Ideal for campers/motorhomes where weight differences may occur due to the interior design or the way the vehicle is equipped or loaded.

With the full air suspension system on the rear axle, you choose ultimate convenience and comfort. The automatic height control keeps the camper/motorhome at the preset ride height under all loading conditions, and the air suspension bellows effortlessly absorb any unevenness in the road surface. Thus, driver and passengers are optimally comfortable and safe on the way to their destination under all conditions.

Auxiliary air suspension

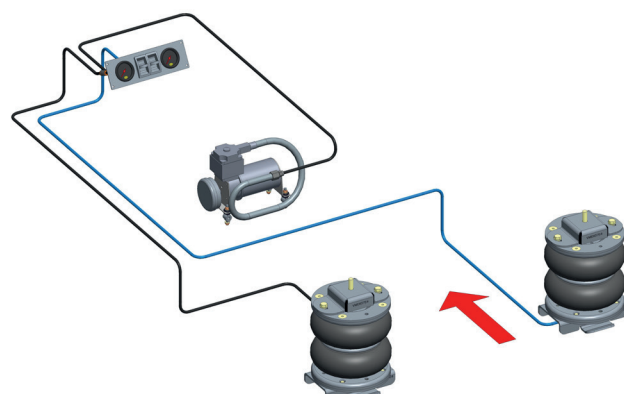
The auxiliary air suspension provides variable support to the vehicle's existing suspension. The variable support is provided by two air spring bellows. Depending on the type, the air spring bellows are placed in the original spring or in addition to the existing suspension system on the rear axle (also in the case of a leaf spring).



Air Master Basic

NR-.....-B

You place this auxiliary air suspension in addition to the existing suspension. The two air spring bellows can be operated independently of each other. The set comes complete with mounting material, including a double inflation valve.



Air Master Comfort

NR-.....-C, NR-.....-CS, NR-.....-CM

The Air Master Comfort is a powerful solution. The two air spring bellows are supplied, including mounting material, compressor and dual control panel. The compressor provides even more convenience and flexibility on the road. The auxiliary air suspension can be adjusted left and right separately via the control panel provided.





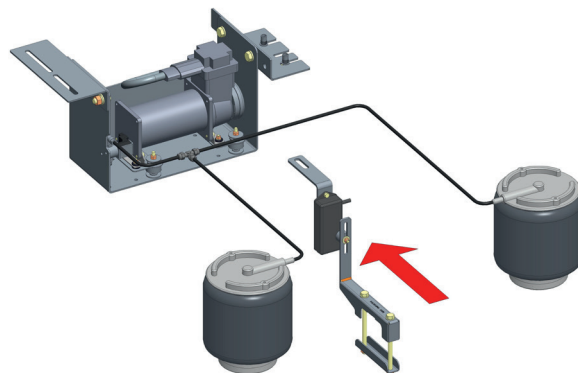
Full air suspension

Our full air suspension replaces the vehicle's original suspension. Set the desired ride height once via the height sensor and the system regulates itself, fully automatically. With the Air Master Ultimate, you choose optimum comfort, stability, drivability, convenience and safety.

Air Master Ultimate NR-..78..

The Air Master Ultimate offers the right ride height under all conditions. Regardless of the weight of the load or the number of passengers. The system consists of, among other things, two air spring bellows, a height sensor, a compressor and mounting materials.

The Air Master Ultimate is equipped with a contactless height measurement. This makes the automatic height control completely interference-free.



Find the best solution right away

Easily find a suitable suspension system online based on the vehicle data.



www.mad-suspensionsystems.com



Model	Type	Engine	Year start year end	FRONT	REAR			
				Lift springs	Reinforced mainsprings	Auxiliary coil suspension	Auxiliary air suspension	Full air suspension
AL-KO								
Enkel as	AMC-1	All	01-2002 01-2006				●	
Enkele as	AMC-F1	All	01-2007			●	●	
Enkele as	MC35T616	All	07-2015			●	●	
Dubbele as	AMC-1	All	01-2002 01-2006				●	
Dubbele as	AMC-F1	All	01-2007			●	●	
CITROËN								
Jumper	230, 230L	All	02-1994 04-2002			●	●	
Jumper	244		04-2002 07-2006	●		●	●	
Jumper	Y, 250, 290	All, Incl. e-Jumper	04-2006	●		●	●	
Jumpy	VF	All	01-2007 05-2016			●		
Jumpy	V	All, Incl. Electric	04-2016	●	●	●		●
FIAT								
Ducato	230, 230L	All	02-1994 04-2002			●	●	
Ducato	244	All	04-2002 07-2006	●		●	●	
Ducato	250, 290	All, Incl. e-Ducato	07-2006	●		●	●	
Scudo	270, 272	All	01-2007 03-2016			●		
Scudo	V	All, Incl. Electric	01-2022	●	●	●		●
Talento	296	All	06-2016	●	●	●		●
FORD								
Transit	260, 280, 300 (FA)	All	01-2000 12-2014			●	●	
Transit	V363	All	08-2013	●		●	●	
Transit Custom	(V362), 270, 280, 290, 300, 310	All, Incl. MHEV, Excl, PHEV	04-2015	●		●	●	
IVECO								
Daily C	III, IV, V, VI, VII	RWD	05-1999				●	

MODEL PROGRAM



Model	Type	Engine	Year start year end	FRONT	REAR			
				Lift springs	Reinforced mainsprings	Auxiliary coil suspension	Auxiliary air suspension	Full air suspension
IVECO								
Daily S	VI	RWD	03-2014			●	●	
Daily S	VI	RWD	03-2014				●	
MAN								
TGE	UY, UZ, 3,5 T	All	11-2016	●			●	
TGE	UY,UZ 5,0 T	RWD	11-2016		●		●	
MERCEDES BENZ								
Sprinter	901, 902, 903	All	01-1995 05-2006			●	●	
Sprinter	904	All	02-1996 05-2006				●	
Sprinter	906, 3,0-3,5t	RWD	06-2006 01-2018	●		●	●	
Sprinter	907, 3,0-5,0t	RWD	02-2018	●		●	●	
Sprinter	910	FWD, Incl. e-Sprinter	02-2018	●		●	●	
Sprinter	907, 5,0t	RWD	02-2018			●	●	
Vito + Tourer + V Classe	W447	All, Incl. e-Vito	10-2014	●	●			●
PEUGEOT								
Boxer	230, 230L	All	04-1994 04-2002			●		
Boxer	Z, 244, 244L, 244D	All	04-2002 06-2006	●		●		
Boxer	Y, 250, 290	All, Incl. e-Boxer	04-2006	●		●	●	
Expert	VF3_	All	01-2007 05-2016			●		
Expert + Traveller	V	All, Excl. Electric	04-2016	●	●	●		●
OPEL - VAUXHALL								
Movano	Mk I/A (X70)	All	03-1998 05-2010			●	●	
Movano	Mk II/B (X62)	All	05-2010	●		●	●	
Movano	Mk III/C (U9)	All, Incl. Movano-e	07-2021	●		●	●	
Vivaro	A (X83)	All	03-2001 03-2014			●		

MODEL PROGRAM



Model	Type	Engine	Year start year end	FRONT	REAR			
				Lift springs	Reinforced mainsprings	Auxiliary coil suspension	Auxiliary air suspension	Full air suspension
OPEL - VAUXHALL								
Vivaro	B (X82)	All	06-2014 03-2019	●		●		●
Vivaro + Zafira	C (K0)	All. incl. Electric	03-2019	●		●		●
Vivaro + Zafira	C (K0)	All. Excl. Electric	03-2019	●	●	●		●
RENAULT								
Master	II (FD)	All	03-1998 05-2010			●	●	
Master	III (FV)	All, Incl. Electric	02-2010			●		
Master	III (FV)	All	02-2010	●				
Trafic	II (JL/FL)	All	03-2001 08-2014	●	●	●		●
Trafic	III (JG/FG)	All	05-2014	●	●	●		●
TOYOTA								
Proace	MDX	All	06-2013 03-2016			●		
Proace + Verso	MDZ, MPY	All, Excl. Electric	02-2016	●	●	●		●
VOLKSWAGEN								
Crafter	2E 3,5t	RWD	04-2006 12-2016	●		●	●	
Crafter	2E, 4,6-5,0t	RWD	04-2006 12-2016	●		●	●	
Crafter	SY / SX 3,5 T	All, Incl. e-Crafter	09-2016	●		●	●	
Crafter	SY / SX 5,0 T	RWD	09-2016	●		●	●	
Transporter	T5, T5GP, T6, T6.1	All	04-2003	●	●	●	●	●

MAD Support

Please contact our Sales Support department for advice:

T +31 318 586 100

E salesupport@mad-automotive.com



MAD PROJECT SERVICE

A customized suspension system, for every project

With a large fleet of vehicles, durability and safety are important aspects. It may happen that our extensive range of suspension systems does not offer a solution in some situations. In such cases, MAD therefore offers the possibility of developing a customized solution, in cooperation with the motorhome builder or specialist. For example, it is possible to compensate exactly for the weight of the load or to create more ground clearance. Of course, we respect vehicle manufacturers' guidelines and applicable laws and regulations in doing so.

What can we help you with?

Please contact us.

T +31 318 586 100
E salesupport@mad-automotive.com

MASTERING ALL YOUR COIL AND AIR SUSPENSION SOLUTIONS.



Suspension
Systems

Made in the Netherlands
mad-suspensionsystems.com

V1-2023-01